

LOG OF THE LIBERATORS

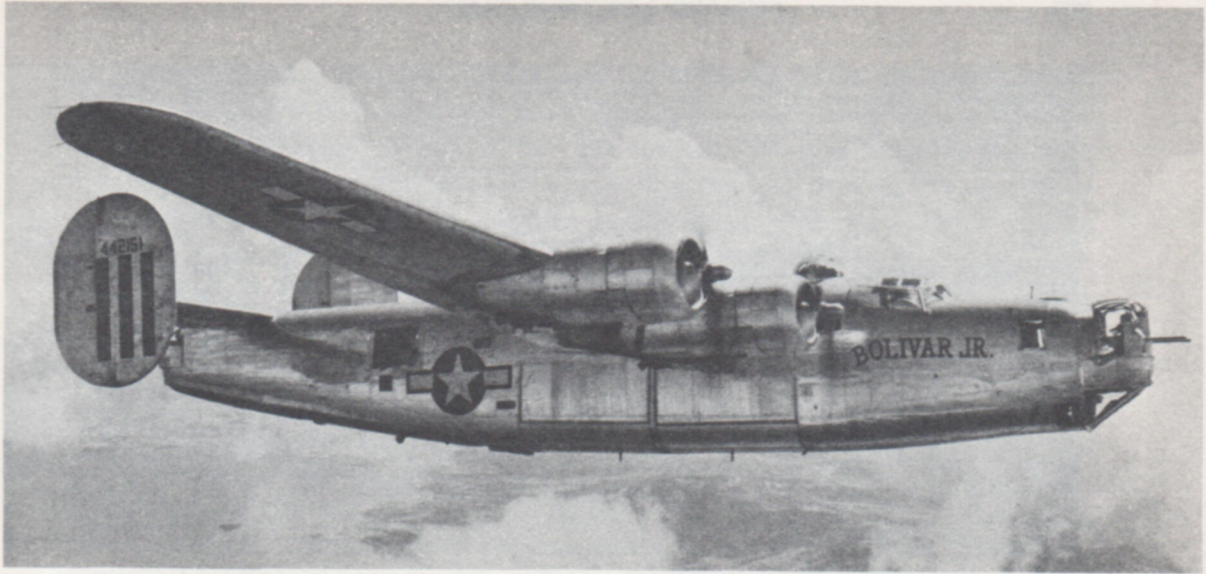
An Illustrated History of the B-24

STEVE BIRDSALL

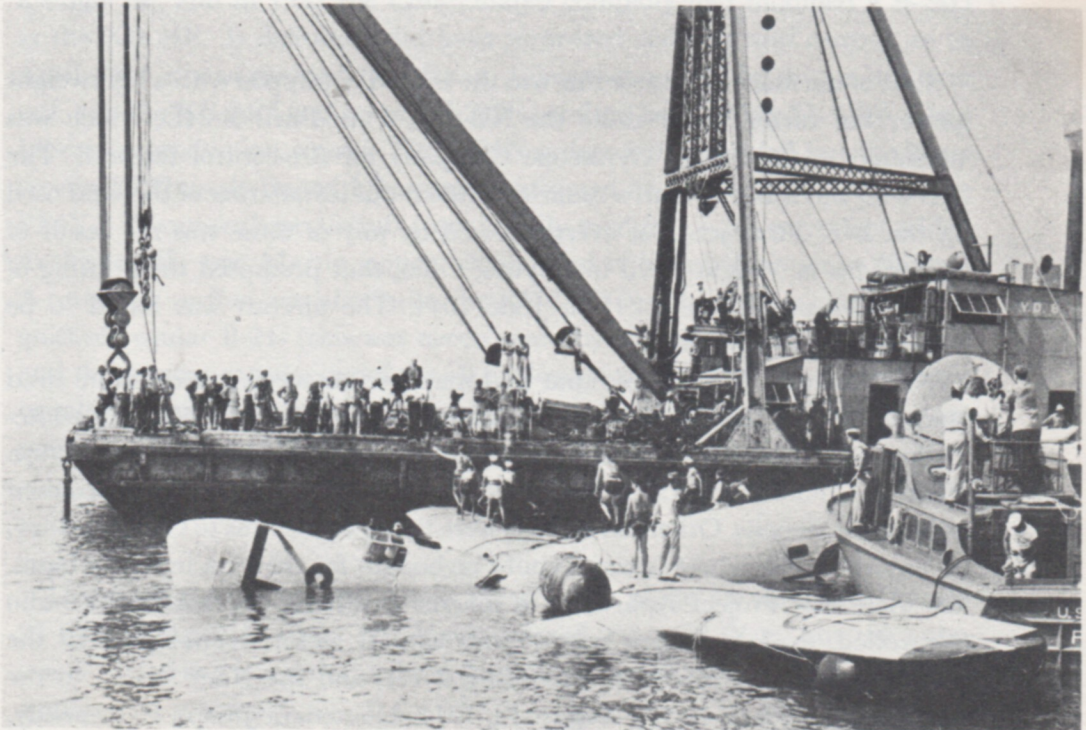
Color Illustrations by John Preston

1973

DOUBLEDAY & COMPANY, INC., Garden City, New York



The final B-24 model produced in quantity was the B-24M; there were 916 produced by Ford, 1,677 by Ford, 2,593 in all. Bolivar Jr. flew with the 11th Bomb Group, although she was intended as a "replacement" for 30th's Bolivar, which crashed in California at the beginning of a bond tour.



"Ditchability" tests were conducted with this old B-24D; the Liberator had a tendency to squash, and Eight Air Force crews were hardly delighted by the fact that they had only one-tenth of the ditching survival chance of a Fortress crew. (Convair)

Appendix

LIBERATOR PRODUCTION

The list which follows includes all 18,482 Liberators which were built between 1939 and 1945, designated as they were built at the five factories. Many of the aircraft were redesignated as PB4Ys, F-7s, C-109s, or one-of-a-kind experiments like the XB-41, which started out as B-24D 41-11822.

When a change was made in a model which did not justify a new model designation, there was a change of "block number" for the aircraft production batch effected by the change or changes. Many of the modifications had filtered back to the production line as a result of combat experience, but there



Michigan, 44-40429, and Cocktail Hour, 44-40428, both B-24J-161-COs from the 43rd Bomb Group. Their billboard decorations were painted by the greatest combat artist of the war. (Stewart N. Bolling)

were always more, and these were handled by modification centers both in the United States and overseas. Typical of these was the slab of armor fitted to all Eighth Air Force B-24s, on each side of the cockpit, and armament modifications were widespread, from Halpro's installation of twin fixed nose guns fired by the pilot to the Seventh Air Force's installation of a .30-caliber in place of the astrodome.

To facilitate the identification of the various airplanes, the factories assigned block numbers in multiples of five, leaving the intervening numbers for later assignment by modification centers; thus a B-24J like *Michigan* began as a B-24J-160-CO at San Diego, but was a B-24J-161-CO by the time she reached the combat zone.

CONSOLIDATED, SAN DIEGO

<i>Model</i>	<i>Serial Numbers</i>	<i>Quantity</i>	<i>Model</i>	<i>Serial Numbers</i>	<i>Quantity</i>
XB-24 (XB-24B)	39-680	1		41-11909—41-11938	30
RB-24	40-702	1	B-24D-1	41-23640—41-23668	29
LB-30A	AM258—AM263	6		41-23671—41-23693	23
Liberator I	AM910—AM929	20		41-23697—41-23724	28
Liberator II	AL503—AL641, FP685	140		41-23728—41-23750	23
RB-24A	40-2369—40-2377	9	B-24D-5	41-23751—41-23755	5
RB-24C	40-2378—40-2386	9		41-23759—41-23790	32
B-24D	40-696—40-701	6		41-23794—41-23824	31
	40-2349—40-2368	20	B-24D-7	41-23825—41-23849	25
	41-1087—41-1142	56		41-23853—41-23858	6
	41-11587	1	B-24D-10	41-23864—41-23902	39
	41-11590—41-11603	14		41-23906—41-23919	14
	41-11606	1	B-24D-13	41-23920—41-23958	39
	41-11609—41-11626	18		41-23960—41-23969	10
	41-11629—41-11638	10	B-24D-15	41-23970—41-24003	34
	41-11643—41-11654	12		41-24007—41-24026	20
	41-11658—41-11673	16		41-24030—41-24099	70
	41-11677—41-11703	27	B-24D-20	41-24100—41-24138	39
	41-11710—41-11727	18		41-24142—41-24157	16
	41-11734—41-11741	8		41-24164—41-24171	8
	41-11748—41-11753	6		41-24175—41-24219	45
	41-11757—41-11787	31	B-24D-25	41-24220—41-24311	92
	41-11790—41-11799	10		41-24339	1
	41-11801—41-11836	36	B-24D-30	42-40058—42-40137	80
	41-11839—41-11863	25	B-24D-35	42-40138—42-40217	80
	41-11865—41-11906	42	B-24D-40	42-40218—42-40257	40
			B-24D-45	42-40258—42-40322	65



Charlot the Harlot, 42-40339, a B-24D-50-CO. She began her war with the 480th Antisubmarine Group and ended it as a trainer at Peterson Field, Colorado, in 1944. (Bill Zoerb)

Model	Serial Numbers	Quantity
B-24D-50	42-40323—42-40344	22
B-24D-53	42-40345—43-40392	48
B-24D-55	42-40393—42-40432	40
B-24D-60	42-40433—42-40482	50
B-24D-65	42-40483—42-40527	45
B-24D-70	42-40528—42-40567	40
B-24D-75	42-40568—42-40612	45
B-24D-80	42-40613—42-40652	40
B-24D-85	42-40653—42-40697	45
B-24D-90	42-40698—42-40742	45
B-24D-95	42-40743—42-40787	45
B-24D-100	42-40788—42-40822	35
B-24D-105	42-40823—42-40867	45
B-24D-110	42-40868—42-40917	50
B-24D-115	42-40918—42-40962	45
B-24D-120	42-40963—42-41002	40
B-24D-125	42-41003—42-41047	45
B-24D-130	42-41048—42-41092	45
B-24D-135	42-41093—42-41137	45
B-24D-140	42-41138—42-41172	35
B-24D-145	42-41173—42-41217	45
B-24D-150	42-41218—42-41257	40
B-24D-155	42-72765—42-72814	50
B-24D-160	42-72815—42-72864	50
B-24D-165	42-72865—42-72914	50
B-24D-170	42-72915—42-72963	49
B-24J-1	42-72964—42-73014	51
B-24J-5	42-73015—42-73064	50
B-24J-10	42-73065—42-73114	50
B-24J-15	42-73115—42-73164	50
B-24J-20	42-73165—42-73214	50
B-24J-25	42-73215—42-73264	50
B-24J-30	42-73265—42-73314	50
B-24J-35	42-73315—42-73364	50
B-24J-40	42-73365—42-73414	50
B-24J-45	42-73415—42-73464	50
B-24J-50	42-73465—42-73514	50
B-24J-55	42-99936—42-99985	50
B-24J-60	42-99986—42-100035	50
B-24J-65	42-100036—42-100085	50
B-24J-70	42-100086—42-100135	50
B-24J-75	42-100136—42-100185	50
B-24J-80	42-100186—42-100235	50
B-24J-85	42-100236—42-100285	50
B-24J-90	42-100286—42-100335	50
B-24J-95	42-100336—42-100385	50
B-24J-100	42-100386—42-100435	50
B-24J-105	42-109789—42-109838	50
B-24J-110	42-109839—42-109888	50
B-24J-115	42-109889—42-109938	50
B-24J-120	42-109939—42-109988	50
B-24J-125	42-109989—42-110038	50
B-24J-130	42-110039—42-110088	50
B-24J-135	42-110089—42-110138	50
B-24J-140	42-110139—42-110188	50
B-24J-145	44-40049—44-40148	100
B-24J-150	44-40149—44-40248	100
B-24J-155	44-40249—44-40348	100
B-24J-160	44-40349—44-40448	100
B-24J-165	44-40449—44-40548	100
B-24J-170	44-40549—44-40648	100
B-24J-175	44-40649—44-40748	100
B-24J-180	44-40749—44-40848	100
B-24J-185	44-40849—44-40948	100
B-24J-190	44-40949—44-41048	100
B-24J-195	44-41049—44-41148	100
B-24J-200	44-41149—44-41248	100
B-24J-205	44-41249—44-41348	100



Weather Witch, a B-24L-11-FO specially modified for the 55th Recon Squadron (long Range Weather) and based on Guam.



Ramp Champ, 44-41996, a B-24M-10-CO. This black-bellied ship flew with the 3rd Photo Recon Squadron from the Marianas in June 1945, as a part of XXI Bomber Command. (Barry Gilkes)

Model	Serial Numbers	Quantity	Model	Serial Numbers	Quantity
B-24J-210	44-41349—44-41389	41	B-24M-10	44-41949—44-42048	100
B-24L-1	44-41390—44-41448	59	B-24M-15	44-42049—44-42148	100
B-24L-5	44-41449—44-41548	100	B-24M-20	44-42149—44-42248	100
B-24L-10	44-41549—44-41648	100	B-24M-25	44-42249—44-42348	100
B-24L-15	44-41649—44-41748	100	B-24M-30	44-42349—44-42448	100
B-24L-20	44-41749—44-41806	58	B-24M-35	44-42449—44-42548	100
B-24M-1	44-41807—44-41848	42	B-24M-40	44-42549—44-42648	100
B-24M-5	44-41849—44-41948	100	B-24M-45	44-42649—44-42722	74

DOUGLAS, TULSA

Model	Serial Numbers	Quantity	Model	Serial Numbers	Quantity
B-24D	41-11754—41-11756	3	B-24J-1	42-51226—42-51292	67
B-24D	41-11864	1	B-24J-5	42-51293—42-51395	103
B-24D-1	41-23725—41-23727	3	B-24J-10	42-51396—42-51430	35
B-24D-5	41-23756—41-23758	3	B-24H-5	41-28640—41-28668	29
B-24E	41-29007—41-29008	2	B-24H-10	41-28669—41-28752	84
B-24E-1	41-28409—41-28416	8	B-24H-15	41-28753—41-28941	189
B-24E-10	41-28417—41-28444	28	B-24H-20	41-28942—41-29006	65
B-24E-15	41-28445—41-28476	32	B-24H-20	42-51077—42-51103	
B-24E-20	41-28477—41-28500	24	B-24H-25	42-51104—42-51181	73
B-24E-25	41-28501—41-28573	73	B-24H-30	42-51182—42-51225	44
B-24H-1	41-28574—41-28639	66			

NORTH AMERICAN, DALLAS

Model	Serial Numbers	Quantity	Model	Serial Numbers	Quantity
B-24G	42-78045—42-78069	25	B-24G-16	42-78353—42-78474	122
B-24G-1	42-78070—42-78074	5	B-24J-1	42-78476—42-78794	319
B-24G-5	42-78075—42-78154	80	B-24J-2	42-78475	1
B-24G-10	42-78155—42-78314	160	B-24J-5	44-28061—44-28276	216
B-24G-15	42-78315—42-78352	38			

FORD, WILLOW RUN

<i>Model</i>	<i>Serial Numbers</i>	<i>Quantity</i>	<i>Model</i>	<i>Serial Numbers</i>	<i>Quantity</i>
B-24E	42-7770	1	B-24J-10	42-51611—42-51825	215
B-24E-1	42-6976—42-7005	30	B-24J-15	42-51826—42-52075	250
B-24E-5	42-7006—42-7065	60	B-24J-20	42-52076	1
B-24E-10	42-7066—42-7122	57		44-48754—44-49001	248
B-24E-15	42-7123—42-7171	49	B-24L-1	44-49002—44-49251	250
B-24E-20	42-7172—42-7229	58	B-24L-5	44-49252—44-49501	250
B-24E-25	42-7230—42-7464	235	B-24L-10	44-49502—44-49751	250
B-24H-1	42-7465—42-7717	253	B-24L-15	44-49752—44-50001	250
B-24H-5	42-7718—42-7769	52	B-24L-20	44-50002—44-50251	250
	42-52077—42-52113	37	B-24M-1	44-50252—44-50451	200
B-24H-10	42-52114—42-52302	189	B-24M-5	44-50452—44-50651	200
B-24H-15	42-52303—42-52776	474	B-24M-10	44-50652—44-50851	200
	42-94729—42-94794	66	B-24M-15	44-50852—44-51051	200
B-24H-20	42-94795—42-95022	228	B-24M-20	44-51052—44-51251	200
B-24H-25	42-95023—42-95288	266	B-24M-25	44-51252—44-51451	200
B-24H-30	42-95289—42-95503	215	B-24M-30	44-51452—44-51928	477
B-24J-1	42-95504—42-95628	125	XB-24N	44-48753	1
	42-50509—42-50759	251	YB-24N-1	44-52053—44-52059	7
B-24J-5	42-50760—42-51076	317			
	42-51431—42-51610	180			

CONSOLIDATED, FORT WORTH

<i>Model</i>	<i>Serial Numbers</i>	<i>Quantity</i>	<i>Model</i>	<i>Serial Numbers</i>	<i>Quantity</i>
B-24D	41-11588—41-11589	2	B-24H-1	41-29116—41-29187	72
	41-11604—41-11605	2		42-64432—42-64440	9
	41-11607	1	B-24H-5	41-29188—41-29258	71
	41-11627—41-11628	2		42-64441—42-64451	11
	41-11705	1	B-24H-10	41-29259—41-29335	77
B-24D-1	42-63752—42-63796	45		42-64452—42-64501	50
B-24D-5	42-63797—42-63836	40	B-24H-15	41-29336—41-29606	271
B-24D-10	42-63837—42-63896	60	B-24H-20	41-29607—41-29608	2
B-24D-15	42-63897—42-63971	75		42-50277—42-50354	78
B-24D-20	42-63972—42-64046	75	B-24H-25	42-50355—42-50410	56
B-24E-10	41-29009—41-29023	15	B-24H-30	42-50411—42-50451	41
B-24E-15	41-29024—41-29042	19	B-24J-1	42-64047—42-64141	95
B-24E-20	41-29043—41-29061	19	B-24J-5	42-64142—42-64236	95
B-24E-25	41-29062—41-29115	54	B-24J-10	42-64237—42-64328	92
	42-64395—42-64431	37		42-64330—42-64346	17



Leo, 41-29605, a B-24H-15-FO from the Zodiacs, the 834th Squadron of the 486th Bomb Group. The other eleven planes in the unit were decorated with equally liberal interpretations of the stars. (Gerald Maddux)



Cherokee Strip, an F-7B from the 20th Combat Mapping Squadron; this model differed from the F-7A by having all its six cameras located in the bomb bay. (E. P. Stevens)

<i>Model</i>	<i>Serial Numbers</i>	<i>Quantity</i>	<i>Model</i>	<i>Serial Numbers</i>	<i>Quantity</i>
B-24J-12	42-64329	1	B-24J-80	44-10703—44-10752	50
B-24J-15	42-64347—42-64394	48	B-24J-85	44-44049—44-44148	100
	42-99736—42-99805	70	B-24J-90	44-44149—44-44248	100
B-24J-20	42-99806—42-99871	66	B-24J-95	44-44249—44-44348	100
B-24J-25	42-99872—42-99935	64	B-24J-100	44-44349—44-44448	100
B-24J-30	44-10253—44-10302	50	B-24J-105	44-44449—44-44501	53
B-24J-35	44-10303—44-10352	50	C-87	41-11608	1
B-24J-40	42-50452—42-50508	57		41-11639—41-11642	4
	44-10353—44-10374	22		41-11655—41-11657	3
B-24J-45	44-10375—44-10402	28		41-11674—41-11676	3
B-24J-50	44-10403—44-10452	50		41-11704	1
B-24J-55	44-10453—44-10502	50		41-11706—41-11709	4
B-24J-60	44-10503—44-10552	50		41-11728—41-11733	6
B-24J-65	44-10553—44-10602	50		41-11742—41-11747	6
B-24J-70	44-10603—44-10652	50		41-11788—41-11789	2
B-24J-75	44-10653—44-10702	50		41-11800	1

<i>Model</i>	<i>Serial Numbers</i>	<i>Quantity</i>	<i>Model</i>	<i>Serial Numbers</i>	<i>Quantity</i>
	41-11837—41-11838	2	C-87A	41-24174	1
	41-11907—41-11908	2	C-87	42-107249—42-107265	17
	41-23669—41-23670	2	AT-22	42-107266	1
	41-23694—41-23696	3	C-87	42-107267—42-107275	9
	41-23791—41-23793	3		43-30548	1
	41-23850—41-23852	3	AT-22	43-30549	1
	41-23859—41-23862	4*	C-87	43-30550—43-30560	11
C-87A	41-23863	1	AT-22	43-30561	1
C-87	41-23903—41-23905	3	C-87	43-30562—43-30568	7
	41-23959	1	C-87A	43-30569—43-30571	3
	41-24004—41-24006	3	C-87	43-30572—43-30573	2
	41-24027—41-24029	3	AT-22	43-30574	1
	41-24139—41-24141	3	C-87	43-30575—43-30583	9
	41-24158	1	AT-22	43-30584	1
C-87A	41-24159	1	C-87	43-30585—43-30627	43
C-87	41-24160—41-24163	4		44-39198—44-39298	101
	41-24172—41-24173	2		44-52978—44-52987	10

*41-23860 was one of the C-87s which were armed for the Hump operation. Two .50 caliber guns were fitted beneath the nose cargo door and on either side of the nose. This particular aircraft arrived at Chabua in April 1943 and was lost the same month.

LIBERATOR SPECIFICATIONS

	B-24D	B-24J	B-24M	C-87	PB4Y-1
LENGTH	66'4"	67'2"	67'2"	66'4"	67'3"
WINGSPAN	110'	110'	110'	110'	110'
HEIGHT	17'11"	18'	18'	18'	17'11"
WING AREA	1048 sq ft	1048 sq ft	1048 sq ft	1048 sq ft	1048 sq ft
EMPTY WEIGHT	32,605 lbs	36,500 lbs	36,000 lbs	31,935 lbs	36,950 lbs
GROSS WEIGHT	60,000 lbs	65,000 lbs	64,500 lbs	56,000 lbs	60,000 lbs
POWER PLANT	R-1830-43	R-1830-65	R1830-65	R-1830-43	R-1830-43/65
ARMAMENT	10 x .50-cal	10 x .50-cal	10 x .50-cal		10 x .50-cal
BOMB/CARGO					
LOAD	8800 lbs	8800 lbs	8800 lbs	8800 lbs	8800 lbs
MAXIMUM SPEED	303 mph	290 mph	300 mph	306 mph	279 mph
CRUISING SPEED	200 mph	215 mph	215 mph	200 mph	200 mph
SERVICE CEILING	32,000 ft	28,000 ft	28,000 ft	31,000 ft	31,800 ft
RANGE	2,850 miles	2,100 miles	2,100 miles	2,900 miles	2,960 miles

The above table of Liberator specifications has been compiled from standard references on the subject, but can only be applied generally.